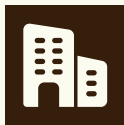




# HONEY AND BEE DERIVATIVES

## COMPANY



Apíario Santos is the initiative of entrepreneur Gilberto Santos, located in the municipality of Aquidauana, Mato Grosso do Sul, where honey production has become a benchmark for the diversity and quality of plants with bee flowers specific to the biome and the differential in the quality of Mel do Pantanal.



Production began outside the Pantanal biome and, after gaining the necessary experience, he migrated the apiary to the Pantanal, where he qualified the honey with the (GI), which is the geographical indication of Pantanal honey. This is recognized by the National Intellectual Property Institute (INPI), and so today they have a unique honey recognized by the Brazilian Ministry of Agriculture.



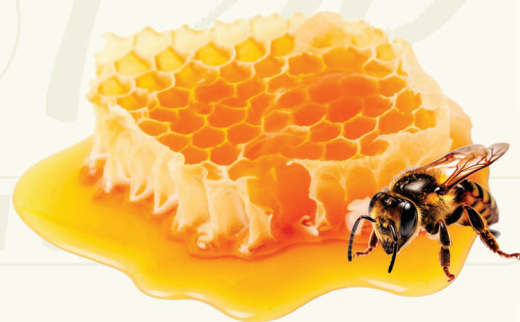
- +55 (67) 9 9687.8045
- gilbertoadao74@gmail.com
- [www.igmeldopantanal.com.br/apiario-santos/](http://www.igmeldopantanal.com.br/apiario-santos/)
- @apiario\_santos\_mel\_do\_pantanal

## PRODUCTS

**NCM 0409.00.00**



Pantanal honey is different because it is produced in a terroir environment, so it is totally different from the others, because the Pantanal is the largest floodplain in the world, together with the high temperatures and a humid environment, it results in a honey with an incredible aroma, color and taste totally different from the others on the market. Not to mention its medicinal properties, as the bees visit more than 206 species of plants, extracting the best from these plants and thus resulting in a unique and tasty honey. The Pantanal is located far from plantations, so you don't come into contact with pesticide residues. Some of the different types of pantanal flower: lixeira, espinheira, camarã, ingazeiro, ximbuva, louro, ipê branco, roxo, vermelho, tarumã, hortelã do campo, aromita, bacuri, morcegueira, castelo and many others. Pantanal honey is sold in 250g glass jars and 260g and 500g tubes, all of which bear the geographical indication seal, which enables traceability and guarantees the origin of the honey.



### DETAILS ON PRODUCTION CAPACITY, SEASONALITY AND OTHER CHARACTERISTICS:



**OUR COMPANY HAS THE CAPACITY TO PRODUCE 4,000 KILOS A YEAR.**



**APIÁRIO SANTOS**  
City: Aquidauana  
State: Mato Grosso do Sul  
Brazil

### CERTIFICATIONS

